

Snowman Pop-Up Card Instructions



What you will need

1 sheet teal construction paper cut to 7-by-10 inches

1 sheet white construction paper cut to 6.5-by-9.5 inches

1 small piece construction paper in each of the following colors: white, green, black, and orange (scraps are perfect)

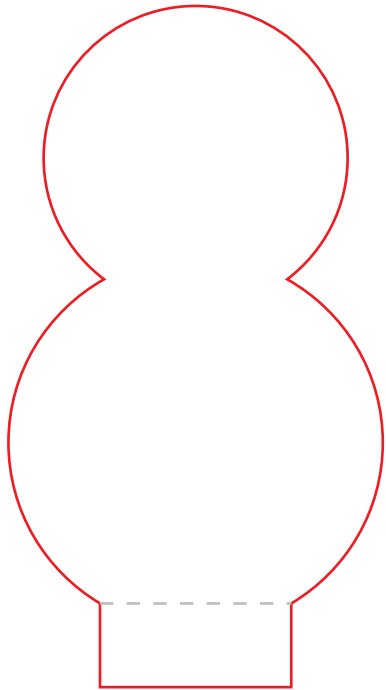
Scissors

Craft knife and cutting mat (useful, but not mandatory)

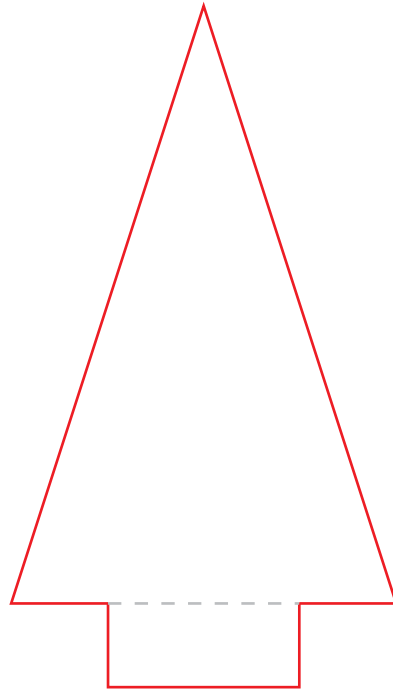
Ruler

Glue stick

Snowman Body



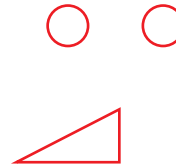
Tree



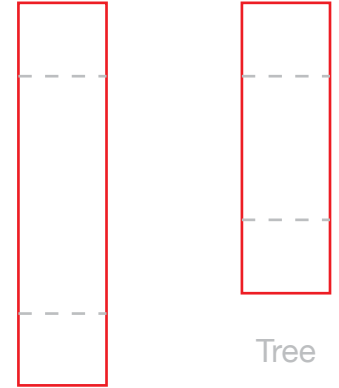
Hat



Eyes and nose



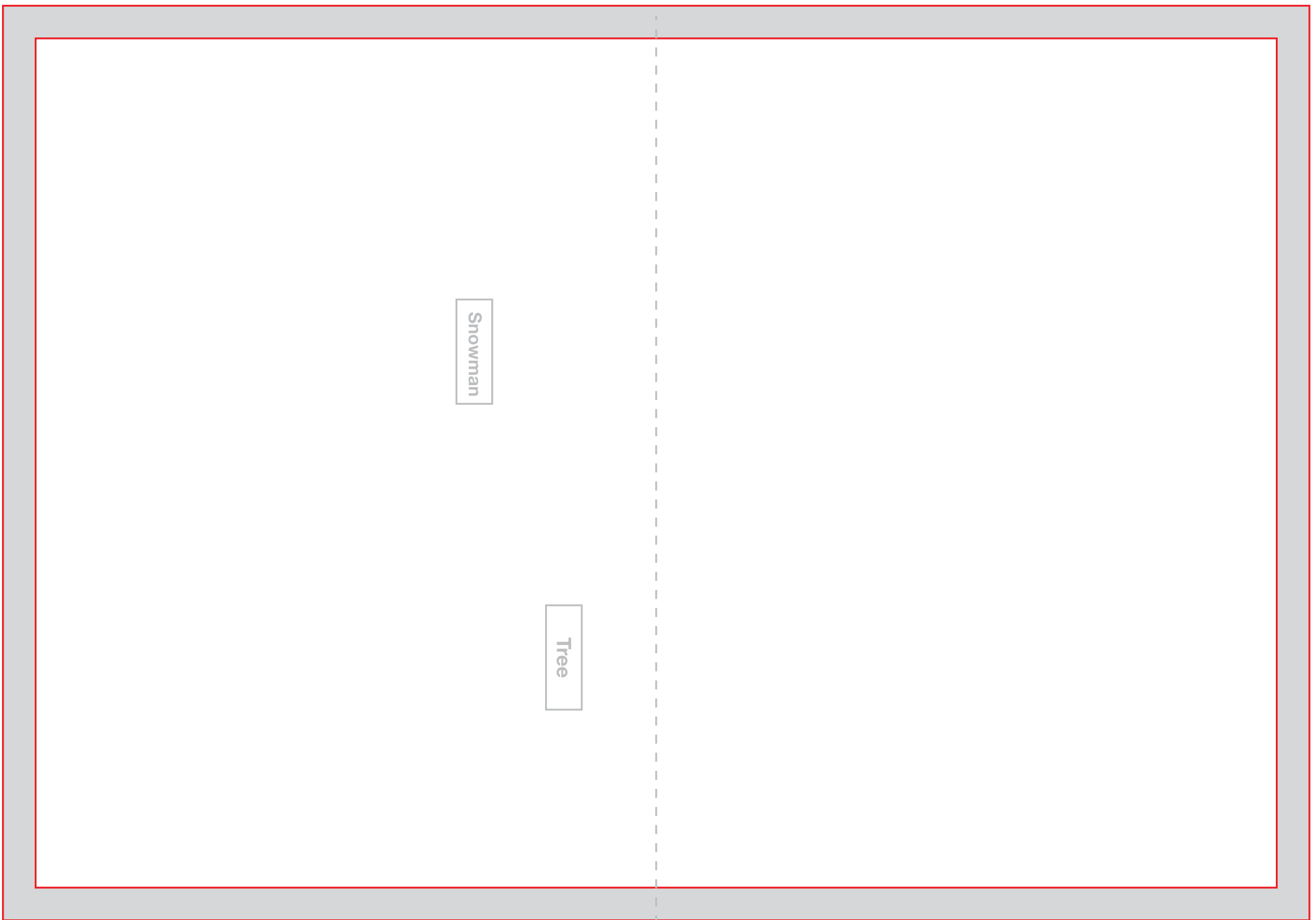
Support



Step 1: Cut out shapes

1. Cut out template shapes above.
2. Place snowman and supports over white construction paper and cut out. Repeat with tree (green paper), hat and eyes (black paper), and nose (orange paper).
3. Fold bottom tabs on snowman and tree where indicated by the dotted line. Fold supports along the dotted lines.
4. Glue hat and face on snowman.





Step 2: Form the card

1. Fold the teal and white paper in half widthwise. Match the creases of the two pages, centering the white paper inside the teal paper, and glue together.
2. Glue the tabs of the snowman and tree to the white page where indicated.
3. Glue one tab of the support to the back of the snowman and the other tab to the other side of the card. Repeat with tree.

