

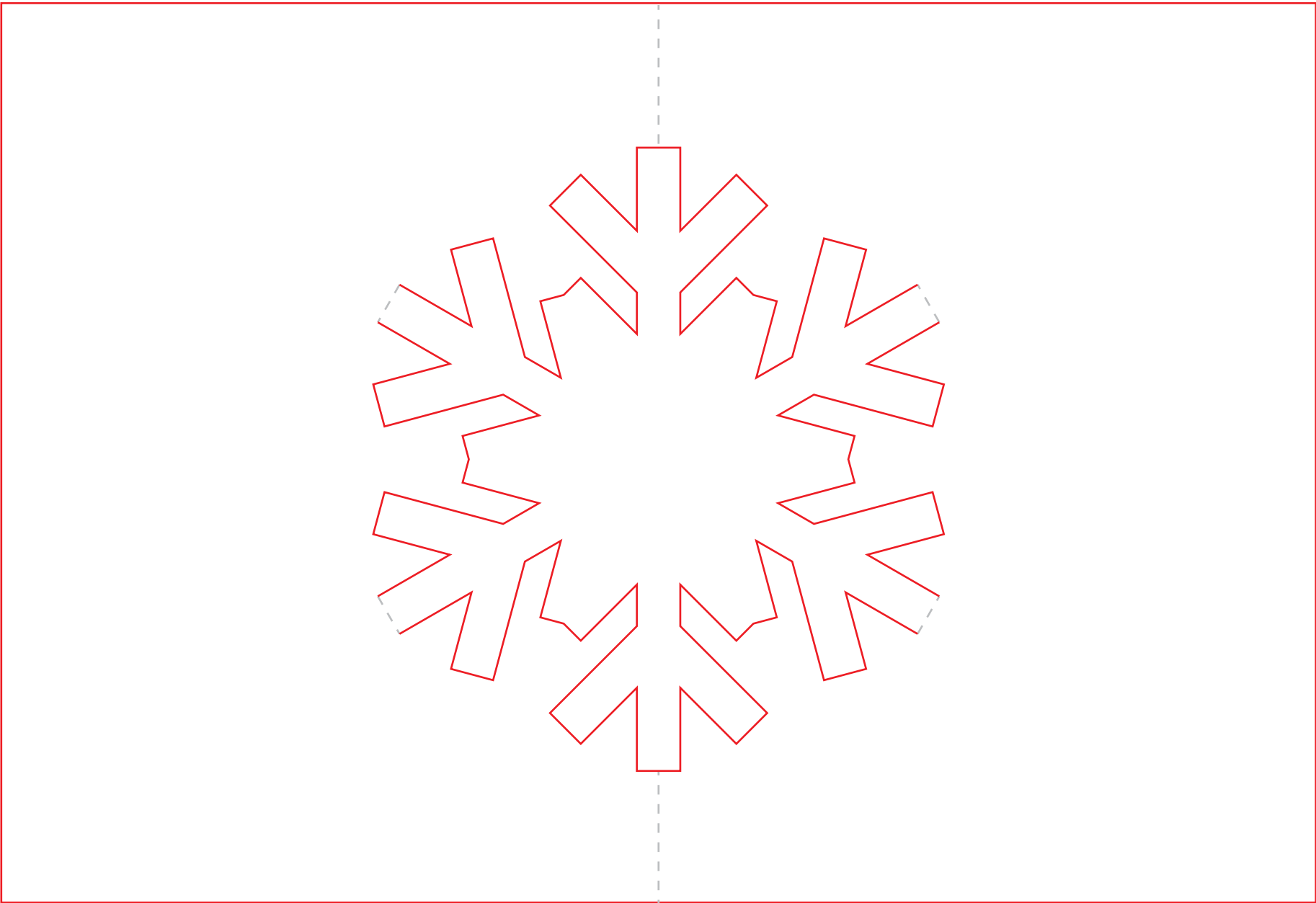
Snowflake Pop-Up Card Instructions



What you will need

- 1 sheet gold construction paper cut to 7-by-10 inches
- 1 sheet white construction paper cut to 6.5-by-9.5 inches
- Scissors
- Craft knife and cutting mat
- Ruler
- Glue stick

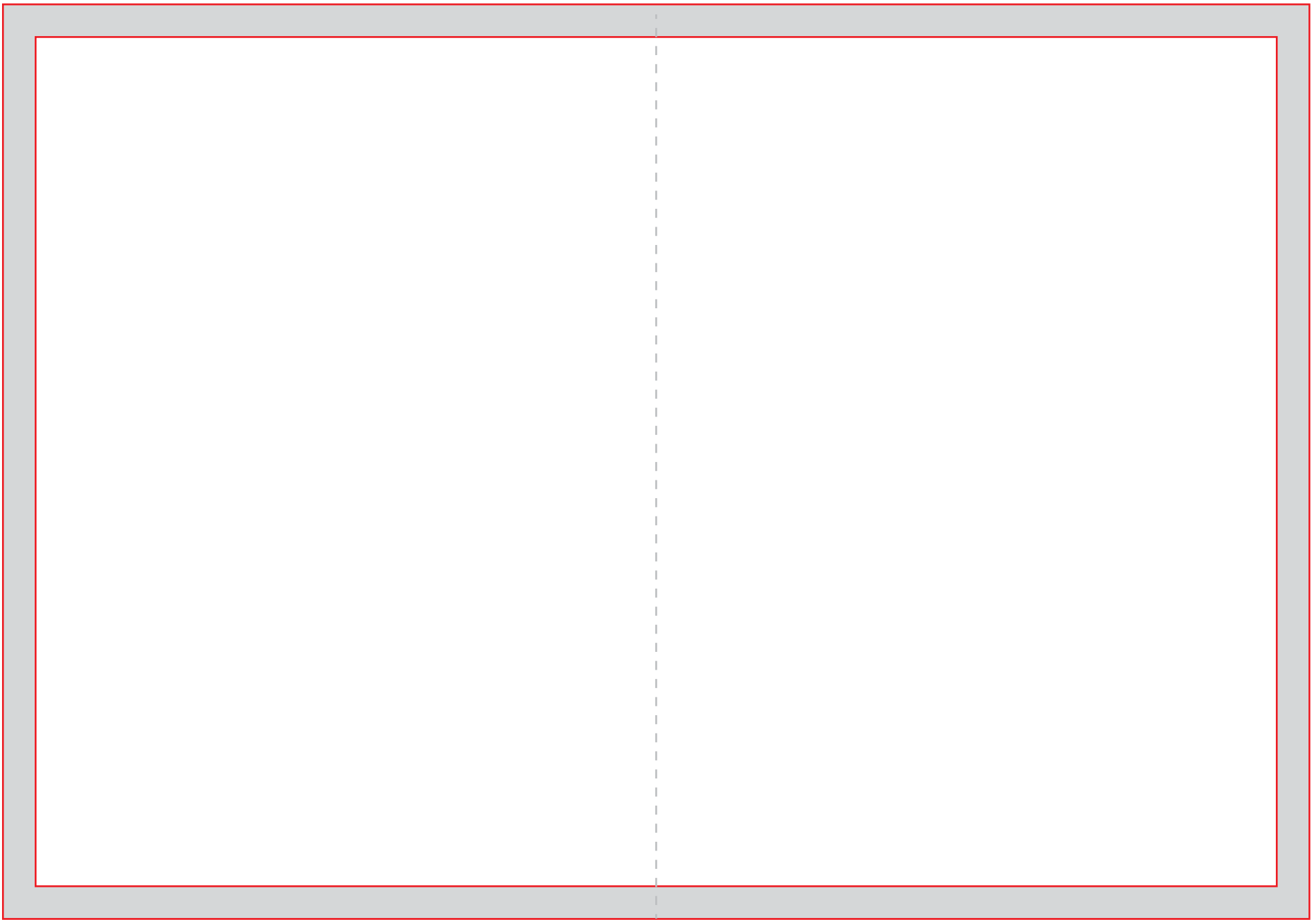
Adult supervision required



Step 1: Cut out the snowflake

1. Place snowflake template on top of white construction paper. Use craft knife to cut snowflake.
Do not cut along the 4 fold lines, indicated by the dotted lines.
2. Fold the 4 dotted lines, then push from behind to pop out the snowflake.
3. Then fold entire page in half. Re-fold the snowflake's crease in the opposite direction so it pops out away from the rest of the card.

————— Cut Line
- - - - - Fold Line



Step 2: Form the card

Fold the gold and white paper in half widthwise. Match the creases of the two pages, centering the white paper inside the gold paper, and glue together.

— Cut Line
- - - - - Fold Line