

SLED

Let's go for a sled ride! This toboggan-style sled will take up your slide-down-a-hill-on-a-piece-of-cardboard game up a few notches. All cutting should be done by adults only.

SUPPLIES

Large corrugated cardboard box

Utility knife

Hot glue gun

Twine

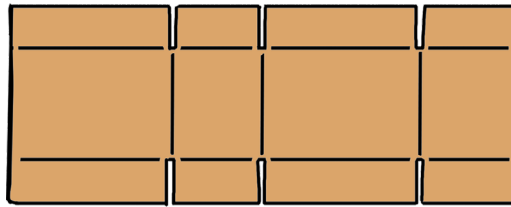
Duct tape (optional)

INSTRUCTIONS



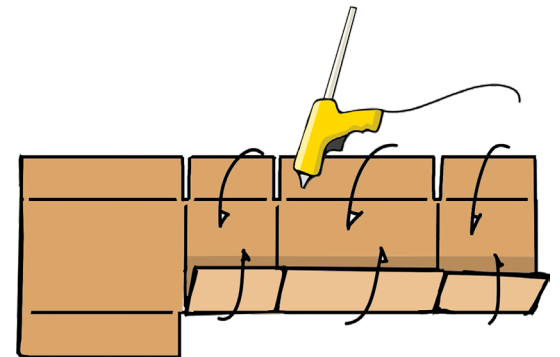
1

Flatten the cardboard box: Open any panels that are glued together and cut along one corner as shown



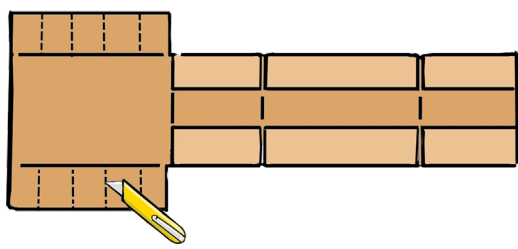
2

Lay out flattened box horizontally.



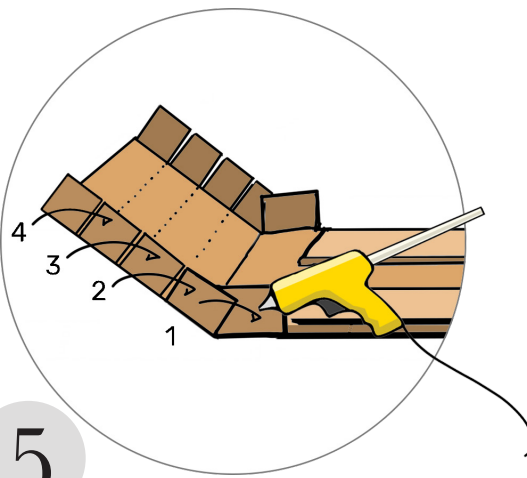
3

Fold down the six side flaps of the right three panels. Using a hot glue gun, glue down the flaps as shown. This will form the seat of the sled.



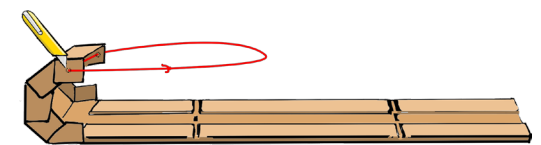
4

Using a utility knife, cut four slits on the two flaps of the far left panel as shown. Make each slit roughly parallel to the slit on the opposite panel.



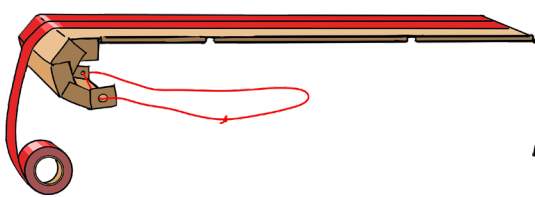
5

Fold the front panel four times along the slit marks, creating a C shape. This will form the front of the sled. Starting from the bottom flap, hot glue the flaps to one another to create the front of the toboggan, as shown.



6

Using a utility knife, cut two holes on the top panel of the C shape. Thread a piece of twine through the holes as shown. This is the steering panel.



7

Optional: Cover bottom of sled in duct tape, running the tape lengthwise, to increase speed.



8

Find a hill—and have fun!

 **SPITFIRE**
INDUSTRY